



CORKTEX®

innovative floor



reddot award 2016
best of the best



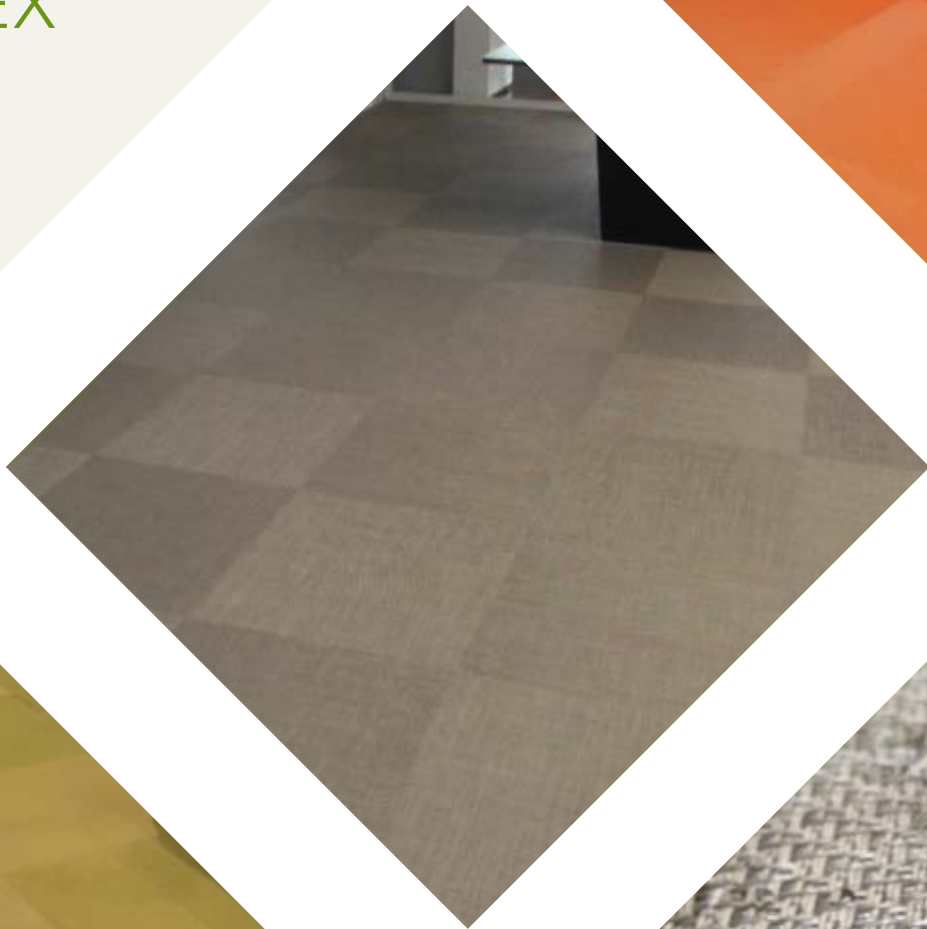
GERMAN
DESIGN
AWARD
WINNER
2018



Delta Selection
Adi Awards
2018



CORKTEX®





What is Corktex®?

PROPERTIES AND APPLICATIONS

CORKTEX® is a product for lining floors, walls and ceilings that is **lasting, decorative and ecological**, offering **comfort when walking on it, acoustic and thermal comfort** in all spaces where it is used. Easy to install, fast and simple to maintain.

The whole **CORKTEX®**, range is designed with fabrics made with **high tenacity polyester thread** and with a covering that offers design, colour, style and resistance to abrasion. They have the **Microban treatment** that prevents the proliferation of **bacteria and fungi**.

These fabrics are fixed to a support comprising a thick and compact agglomerate of **cork and rubber granules highly resistant to compression**, obtained through a recycling process, which gives us a **support or ecological base** that is respectful of the environment.

Recycled material in 85% of its weight. This recycling process consists of using the cork in the form of bottle caps and other presentations that can no longer be reused for these applications. The same applies to the rubber, which comes from waste vehicle tyres. In a grinding and conditioning process, a Cork-Rubber mixture can be obtained for use in various industrial

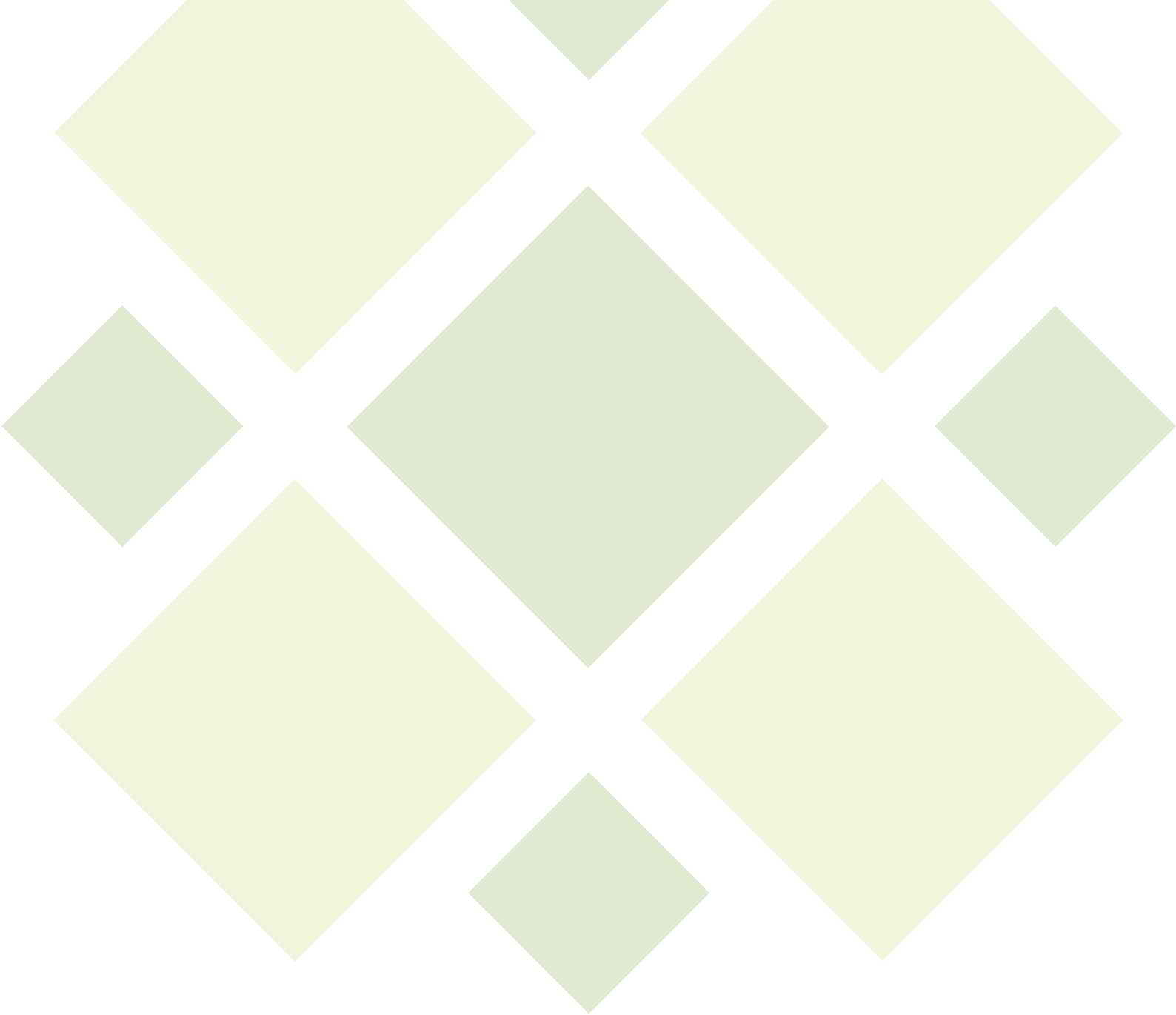
applications, and as a support for the CORKTEX® product.

This compound gives **high soundproofing and good thermal comfort**, and is therefore very suitable both for use as floor and wall lining and in the roof or in plates made for false ceilings. It is also non-slip.

CORKTEX® may be used in public places, hotels, offices, trades, etc.

In greater detail over its applications, we can define the following:

- **Floor covering.** It can be in the form of tiles of different sizes, rolls, etc.
 - **Furniture covering.** Bed headboard, cabinet doors, etc.
 - **Total or partial covering** of walls, skirting, etc.
-



Corktex Book

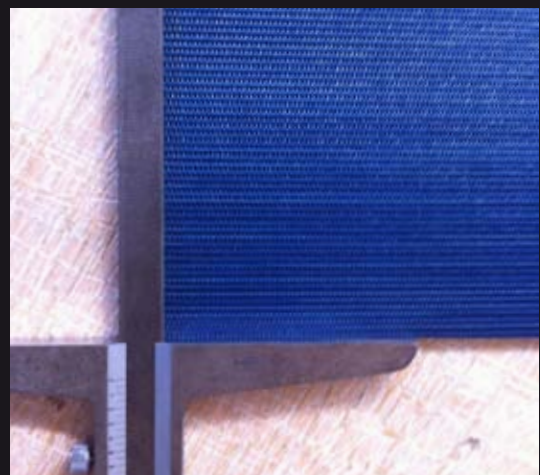


Flexibility

Corktex



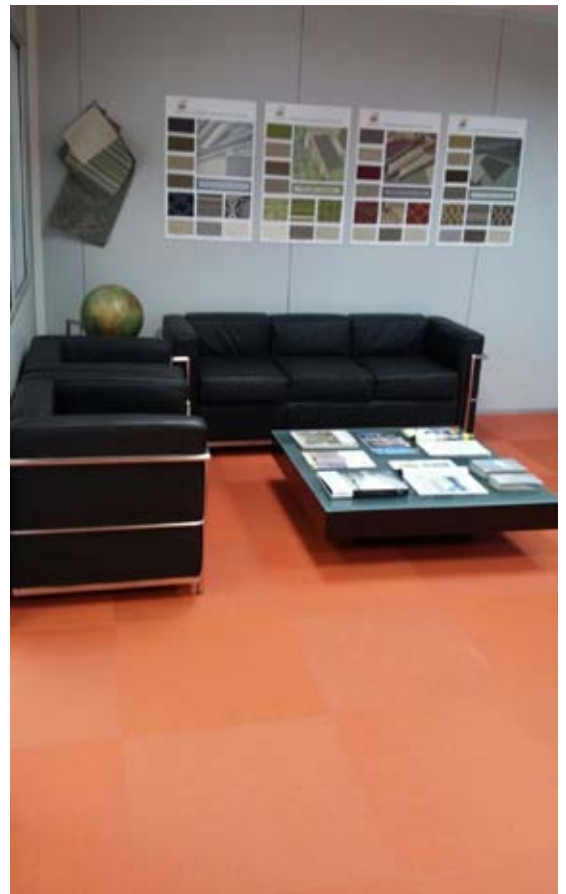
Resistance to detergent



Dimensional reliability

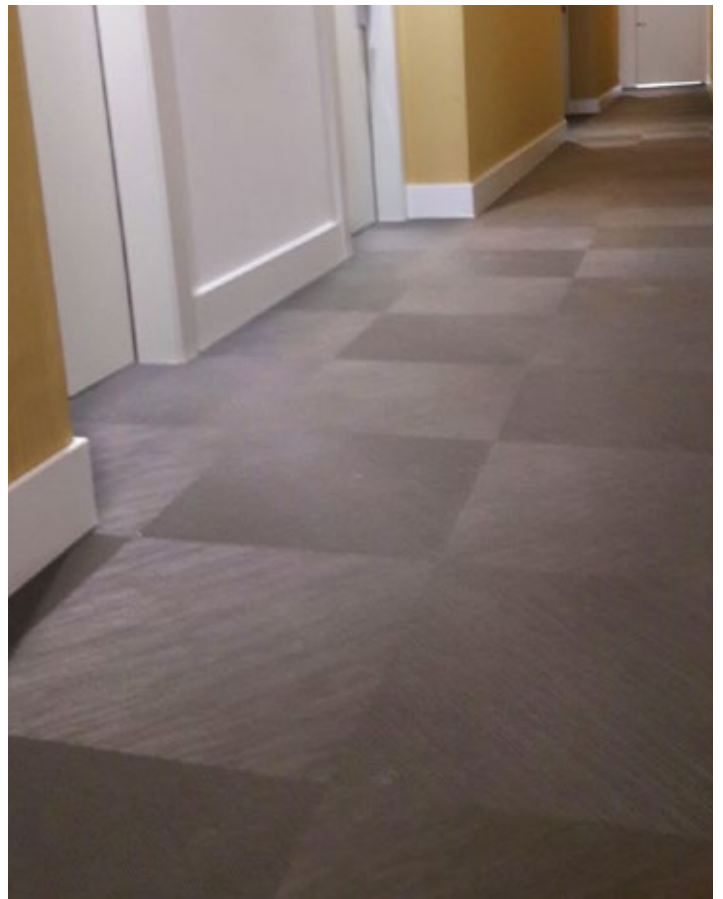


Office





contract





commercial



private
residence

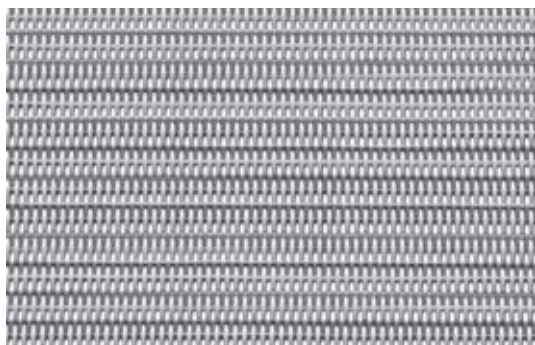


packaging presentation

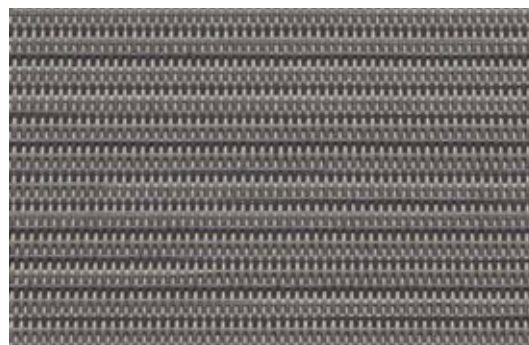




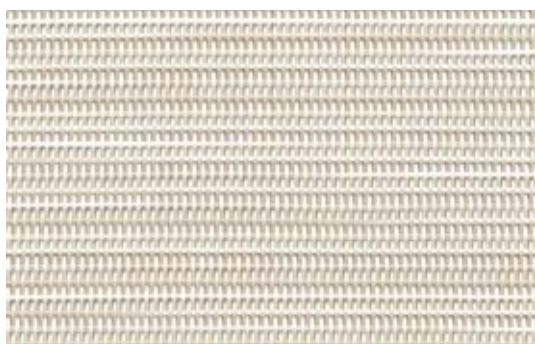
**Models
and references**



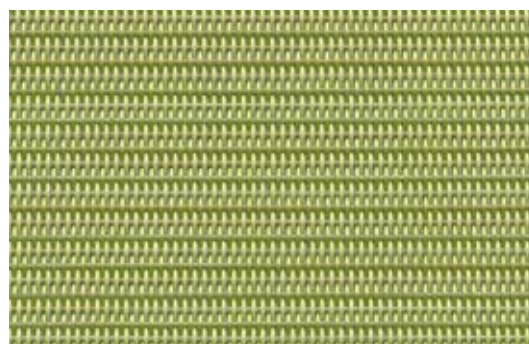
32XUP



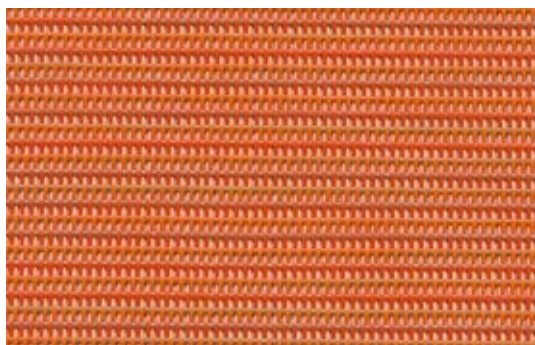
32XXG



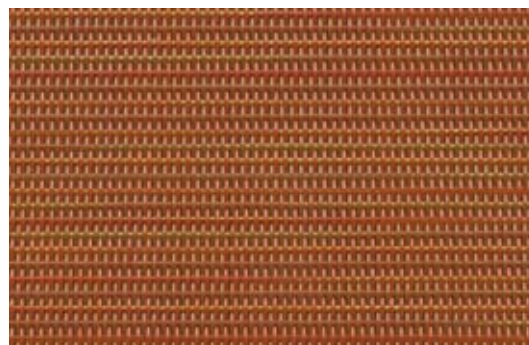
320HK



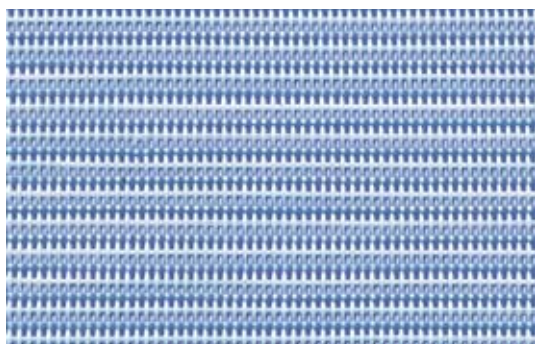
32DJ7



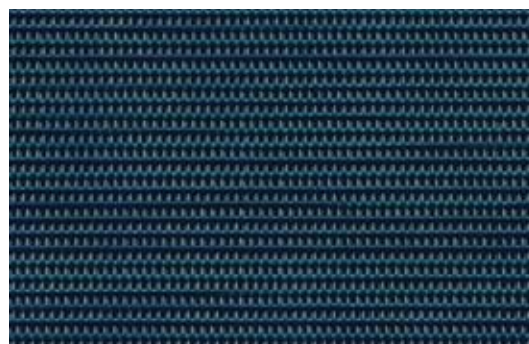
32KK3



32KT1



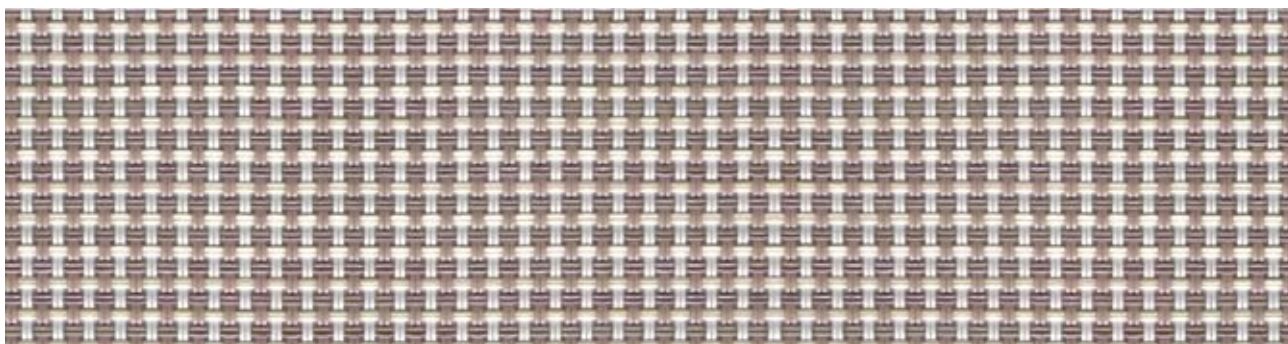
32L37



32L96



32NG8



32NH6



32LDD



32NNG



32KP4



3200V



32AK0



32EH6



32BT3



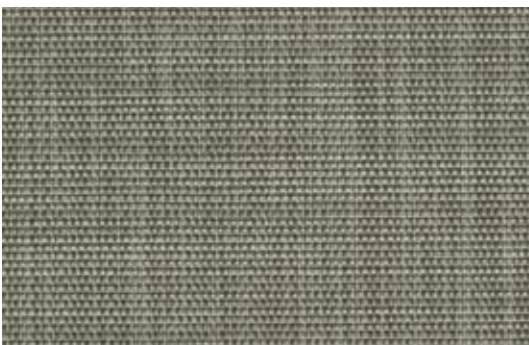
30DR BB9



30DR G2



30DR G10



30DR BN8



30DR BN2



**Technical
specifications**

references models	macba	metropolitan louvre	abu dhabi	requirements
Fabric: Backing: Density Backing: Thickness Backing: RECYCLED MATERIAL: TOTAL WEIGHT: TOTAL THICKNESS:	High tenacity Polyester/PVC Cork-Rubber/Polyurethane 500 kg/m³ 3,2 mm - 0,13 inch 79% 2,55 Kg/m² - 8,34 oz/sq.ft 4,10 mm - 0,16 inch	High tenacity Polyester/PVC Cork-Rubber/Polyurethane 500 kg/m³ 3,2mm - 0,13 inch 75% 2,70 Kg/m² - 8,85 oz/sq.ft 4,30 mm - 0,17 inch	High tenacity Polyester/PVC Cork-Rubber/Polyurethane 500 kg/m³ 3,2mm - 0,13 inch 85% 2,40Kg/m² - 7,86 oz/sq.ft 3,75 mm - 0,15inch	2,0mm - 0,08 inch 72% 1,77 Kg/m² - 5,80 oz/sq.ft 2,65 mm - 0,11inch
LIGHT FASTNESS:	ISO 105 B02	8	8	>5
DIMENSIONAL STABILITY: 2 hours at 60°C 2 hours in water at 20°C 24 hours at 60°C 48 hours atmos.conditioned.	ISO 2551/EN 986 Long. -0,2% Tranv. 0,0% Long. 0,0% Tranv. 0,0% Long. 0,0% Tranv. 0,0% Long. 0,0% Tranv.-0,1%	Long. -0,2% Tranv. 0,0% Long. 0,0% Tranv. 0,0% Long. 0,0% Tranv. 0,0% Long. 0,0% Tranv.-0,1%	Long. -0,2% Tranv. 0,0% Long. 0,0% Tranv. 0,0% Long. 0,0% Tranv. 0,0% Long. 0,0% Tranv.-0,1%	≤ 0,2% ≤ 0,2% ≤ 0,2% ≤ 0,2%
ACOUSTIC ABSORTION:	IMPACT EN ISO 717-2:2013 f(Hz) L(f) db. 1000 15,90 1250 19,70 1600 22,10 2000 24,40 3150 20,10	IMPACT EN ISO 717-2:2013 f(Hz) L(f) db. 1000 15,90 1250 19,70 1600 22,10 2000 24,40 3150 20,10	IMPACT EN ISO 717-2:2013 f(Hz) L(f) db. 1000 15,90 1250 19,70 1600 22,10 2000 24,40 3150 20,10	REVERBERATING CAMERA EN ISO354/ASTM C423-09a f(Hz) awCoefficient 630 0,03 1250 0,10 1600 0,24 2000 0,31 2500 0,24
ACUSTIC ABSORTION ON IMPACT: BASE CORK-RUBBER	EN ISO 717-2:2013	24db.	24db.	20db.
PROPENSITY TO STATIC ELECTRICITY:	ISO 6356:2000	< 0,6 KV	< 0,6 KV	≤ 2,0 KV
RESIDUAL FOOTPRINT:	EN ISO 24343-1 2012	< 0,3 mm.	< 0,3 mm.	≤ 0,3 mm.
WHEELED CHAIR TEST:	EN ISO 985:2002	continous use	continous use	
RESISTANCE TO ABRASION:	EN ISO 12947-2 Martindale Abrasim.	> 100.000 cycles	> 100.000 cycles	> 100.000 cycles
SLIP RESISTANCE:	EN 13893/2003 Coefficient of friction	0,35	0,35	> 0,30
HEAT RESITANCE:	EN 12667:2002	0,063 m2 °K/W	0,063 m2 °K/W	0,063 m2 °K/W
THERMAL CONDUCTIVITY:	EN 13667 :2002	0,0676 W/m2K	0,0676 W/m2K	0,0676 W/m2K
FIRE REACTION CLASSIFICATION:	EN 13501-1:2007+A1:2009 ASTM E648:2007	Cfl-s1 1,04W/cm²	Cfl-s1 1,04W/cm²	Cfl-s1 1,04W/cm²
ANTIBACTERIAL/ANTI-FUNGI FABRICS:	MICROBAN Total elimination	MICROBAN Total elimination	ASTM G21 Total elimination	Total elimination of bacteria/fungi
FABRIC WITHOUT EMISSIONS:	GREENGUARD	GREENGUARD	GREENGUARD	Without emisions
LEAD FREE:	REACH (EC 1907 / 2006)	compliant phthalate free	compliant phthalate free	compliant phthalate free
MAINTENANCE (cleaning):	Water / Detergents	Suitable	Suitable	Suitable
CLASS LEVEL OF USE:	EN 1307:2004 +A1: 2016	Comercial Class level of use 33 heavy	Comercial Class level of use 33 heavy	Comercial Class level of use 33 heavy
CHANGE OF APARENCE: COLOR Vaterman unit EN 15114:2007 +A1 2008 point 4.2.2	5.000 cycles 20.000 cycles	scale of greys 5 scale of greys 5	scale of greys 5 scale of greys 5	scale of greys 5 scale of greys 5
LOSS OF MASS: EN 15114:2007 +A1 2008 point 4.2.3	There and back 2.000 cycl.	from 11,10 to 23,40 gr/m2	from 11,10 to 23,40 gr/m2	from 3,16 to 18,75 gr/m2
STRUCTURAL INTEGRITY: wheeled chair test: EN 15114:2007 +A1 2008 point 4.2.4	10.000 a 25.000 cycles	No damage	No damage	No damage

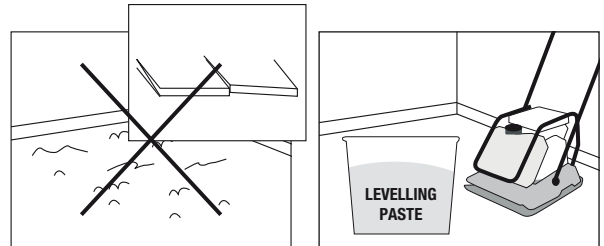


**Installation
and maintenance**

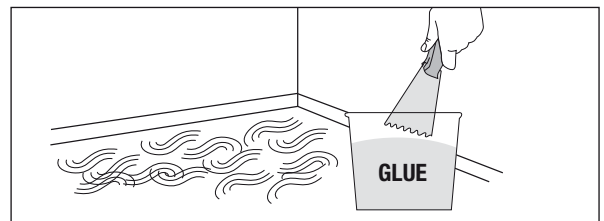


Recommendations for installation

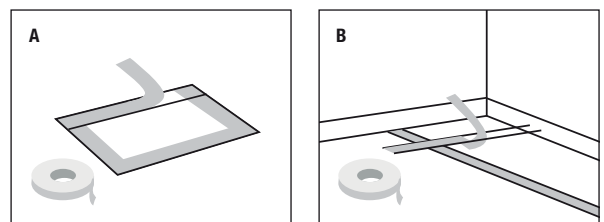
Make sure the surface to be covered is smooth, without bulges and that there are no tiles that are uneven or with separations between them. **Otherwise perform the usual treatments to smooth and level the surface.**



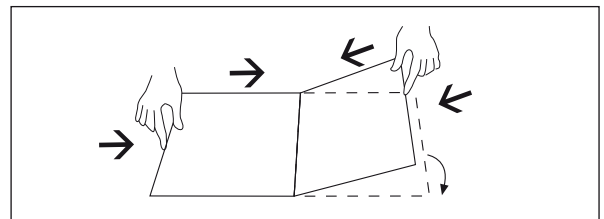
Use glues suitable for gluing cork, such as acrylic water glues, following the instructions for use both for fixed gluing and for the gluing used for the technical floor.



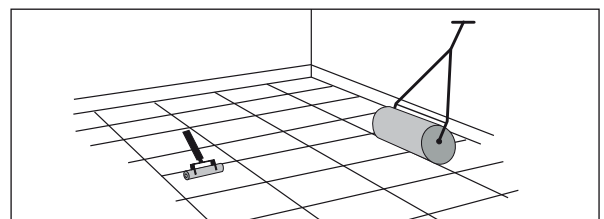
When using adhesive tape, it can be placed both on the back of the tile (A) and on the surface of the floor (B), **taking care that the tiles are adhered all around.**



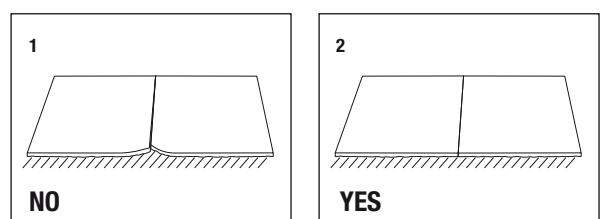
When adjusting one tile against the next, it is advisable to exert a little pressure between them to avoid small separations that could affect the general appearance of the installation.



Use the usual means of installing carpets to **level the joints**, and across the entire surface, such as rollers, etc. Make sure that the covering is completely adhered.



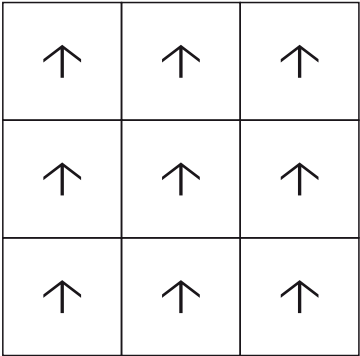
The tiles must necessarily be completely adhered to the surface of the floor, since otherwise, as in Figure 1, their joints can be damaged by the feet passing over them, which fray the fabric.



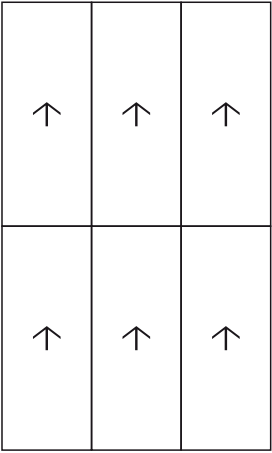
Normal applications

1.

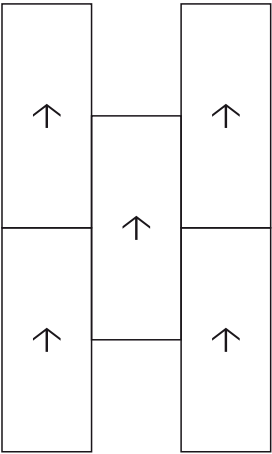
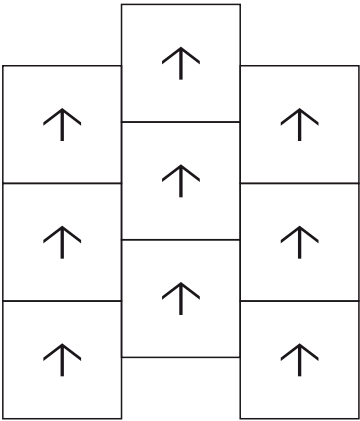
Tiles 60x60 cm



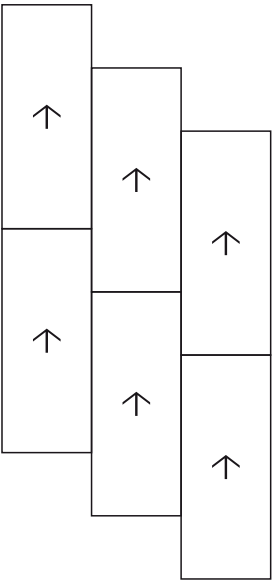
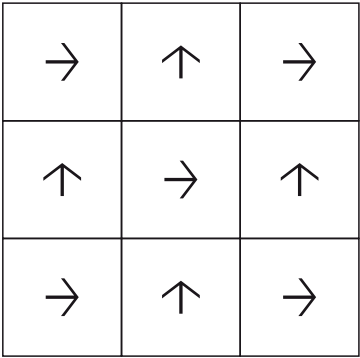
Rolls 300x120 cm



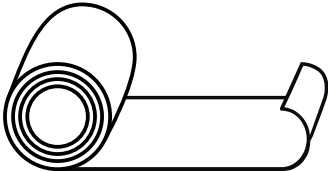
2.



3.



Passage applications
(rolls of 25 and 30 m x1.20 m)





Maintenance and cleaning

- Adequate and periodic maintenance guarantees longer life for CORKTEX and good hygiene in the covering.
- A correct choice of colour and model depending on what the covering is to be used for and where it will be used, reduces the risk of dirt and deterioration of its original appearance.
- Avoid abrasive particles (earth, small stones, etc.) being deposited on the CORKTEX flooring, since they could damage its surface.
- Avoid dragging heavy objects or furniture on the CORKTEX surface without previously protecting it with a plastic sheet or cardboard.
- If spots should appear or occur, they should be eliminated as quickly as possible using the correct products and detergents for each type of stain. In this sense, bleach may be used at high concentrations of up to 70% without damaging the surface.
- When using wheelchairs, use hard wheels. Remember that hard wheels are recommended on soft materials and soft wheels on hard materials.
- Pay attention to prolonged fixed or mobile contact of gummy materials, which could leave stains on the surface of the covering.
- Do not use abrasive elements or sharp tools when cleaning.
- Clean manually each day and mechanically on a regular basis.

Daily cleaning (manual)

- Vacuum clean the CORKTEX covering or use a brush-broom to remove most dust particles and dirt.
- Pass a wet mop with warm or hot water and detergent over the surface to remove any small dirt stain and to restore its initial colour. Leave for 5-10 min. and rinse with a clean mop to remove the previously used detergent. Allow to air dry.

Periodic cleaning (mechanical)

- Vacuum clean the CORKTEX covering.
- Clean the floor with a soft mechanical brush, using hot water and detergents and leaving them to work for 5-10 min.
- Scrubbing-drying machines can be used.
- If some stain has not disappeared, clean it manually with hot water, bleach or detergents. Repeat the rinsing and drying operation.
- To eliminate chewing gum or similar materials, Kärcher type pressure and steam machines can be used.



info@corktex.com
www.corktex.com